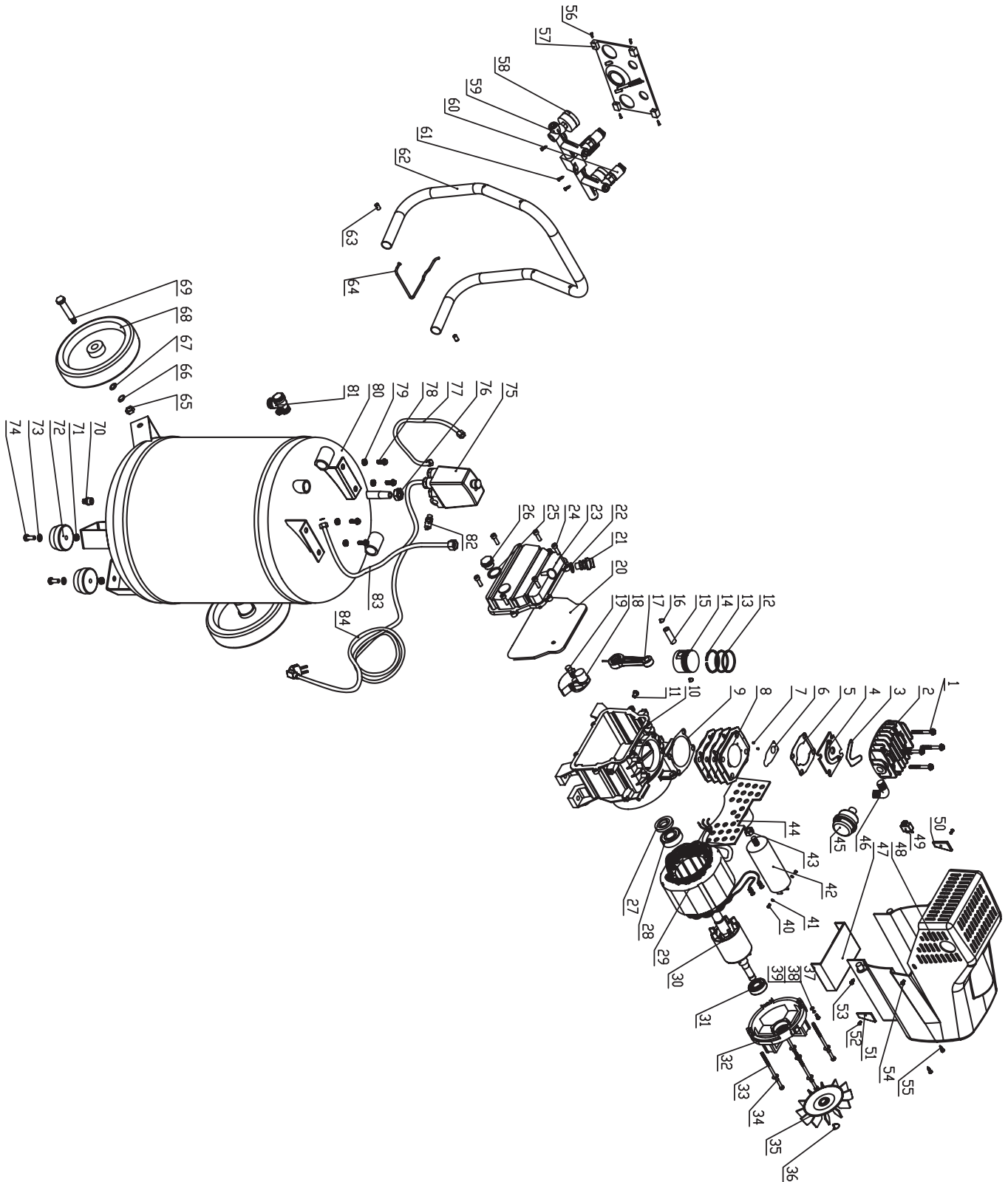




compressoren
AIRPRESS

HL 360-50 TECHNICAL DRAWING

REF. NO.: 36852



makes work easier



HL 360-50 SPARE PARTS LIST

REF. NO.: 36852

no.	name	qty
1	bolt m8x103	4
2	cylinder cover	1
3	cylinder cover gasket	1
4	valve plate	1
5	valve plate gasket	1
6	valve piece	1
7	pin	2
8	cylinder	1
9	cylinder gasket	1
10	crank case	1
11	bolt m12x15	1
12	piston ring	2
13	piston oil-ring	1
14	piston	1
15	piston pin	1
16	circlip	2
17	connecting rod	1
18	crank	1
19	hex bolt m8x22 (left)	1
20	rubber gasket	1
21	breath pipe	1
22	o shape circle $\varnothing 18.3 \times \varnothing 2.65$	2
23	crank case cover	1
24	bolt m5x14	6
25	oil leveler gasket	1
26	oil leveler	1
27	sealing ring	1
28	brearing 6204	1
29	rotor	1
30	stator	1

no.	name	qty
31	brearing 6202	1
32	motor cover	1
33	shoots the pad $\varnothing 5$	4
34	bolt m5x115	4
35	fan	1
36	circlip	1
37	tooth profile pad $\varnothing 4$	1
38	shoots the pad $\varnothing 4$	1
39	bolt m4x10	1
40	bolt m3x6	2
41	shoots the pad $\varnothing 3$	2
42	capacitance	1
43	nut m8	1
44	back plate	1
45	air filter	1
46	connects the bend	1
47	ledger wall	1
48	fan cover	1
49	hot protector	1
50	left back plate	1
51	right back plate	1
52	bolt m5x14	2
53	bolt st3.7x16	2
54	bolt m5x8	2
55	bolt st3.9x12	2
56	bolt st3.9x40	4
57	plastic kneading board	1
58	pressure gauge $\varnothing 40$	2
59	unit support	1
60	quick couplers	2



HL 360-50 SPARE PARTS LIST

REF. NO.: 36852

no.	name	qty
61	bolt st3.9x12	3
62	handle	1
63	bolt m8x8	4
64	release pipe	1
65	nut m10	2
66	shoots the pad φ 10	2
67	plain cushion φ 10	2
68	wheel 7"	2
69	hollow column φ 10	2
70	limber valve	1
71	nut m8	2
72	washer foot	2
73	plain cushion φ 8	2
74	bolt m8x30	2
75	pressure switch	1
76	nut rp3/8	1
77	connecting pipe	1
78	bolt m8x25	4
79	nut m8	4
80	tank	1
81	only-way valve	1
82	safety valve	1
83	discharge pipe	1
84	plug line	1