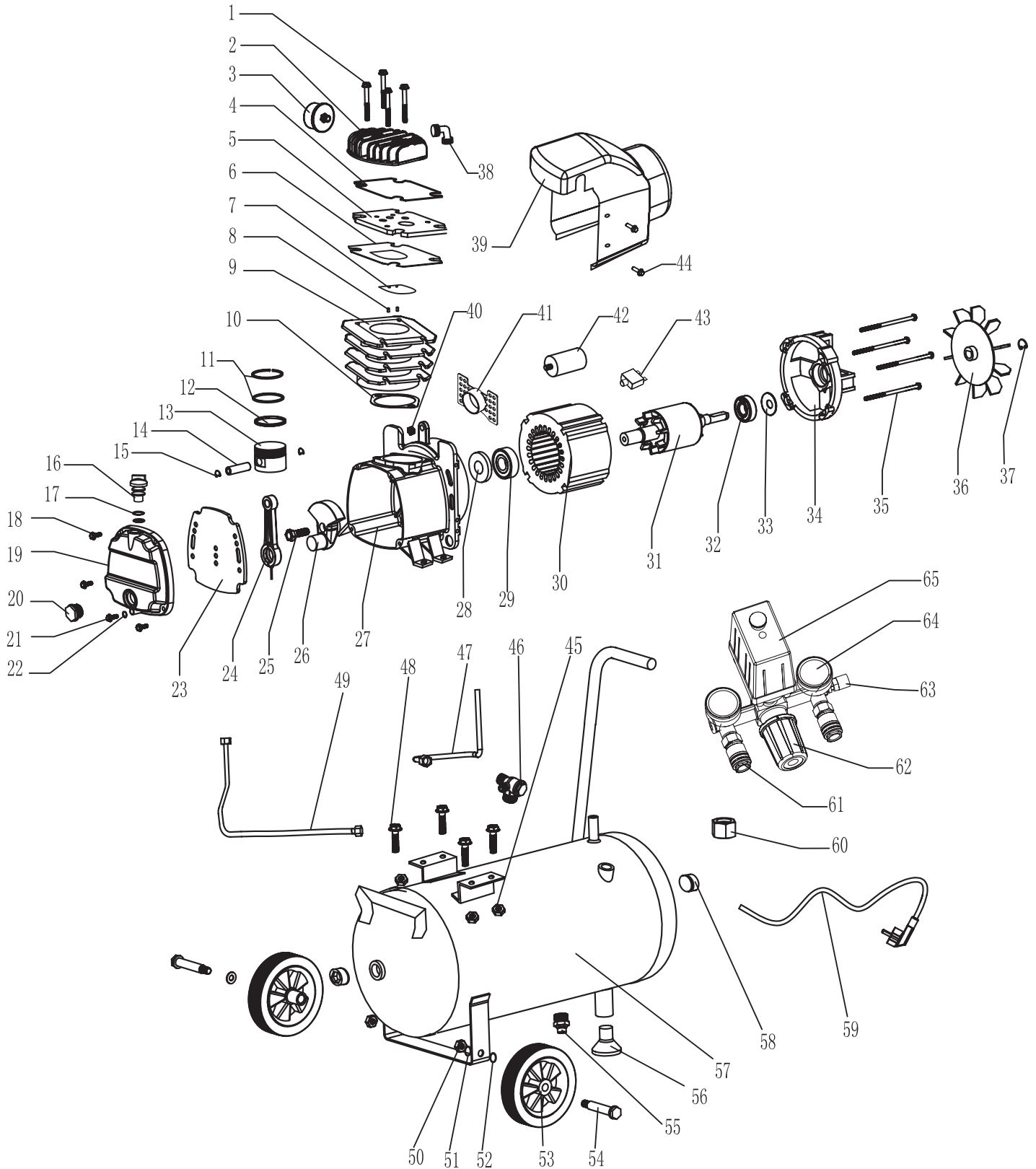




HL 310-25 TECHNICAL DRAWING

REF. NO.: 36839





HL 310-25 SPARE PARTS LIST

REF. NO.: 36839

no.	name	qty
1	bolt m8x105	4
2	cylinder head	1
3	air filter	1
4	cylinder seals	1
5	valve plate	1
6	valve plate gasket	1
7	valve clack	1
8	pin \varnothing 3x6	2
9	cylinder \varnothing 48	1
10	cylinder gasket	1
11	gas ring \varnothing 48*2	2
12	oil ring \varnothing 48*3	1
13	piston \varnothing 48	1
14	piston pin \varnothing 12x39.5	1
15	circlip \varnothing 12	2
16	breath pipe	1
17	o circlip \varnothing 18.3x \varnothing 2.65	2
18	bolt m5x16	4
19	crank case cover	1
20	oil leveler	1
21	bolt m6x10	1
22	o circlip \varnothing 5.6x \varnothing 1.8	1
23	rubber gasket	1
24	conncting rod	1
25	hex bolt m8x22 (left)	1
26	crank 20	1
27	crank case	1
28	sealing ring	1
29	brearing 6204	1
30	stator	1
31	rotor	1
32	brearing 6202	1
33	wave washer d35	1

no.	name	qty
34	motor cover	1
35	bolt m5x105	4
36	wind leaf	1
37	circlip \varnothing 14	1
38	connector	1
39	fan cover	1
40	nut m8	1
41	flap	1
42	capacitance	1
43	thermal protector	1
44	bolt m5x12	4
45	nut m8	4
46	umilateralism	1
47	release pipe \varnothing 6.5	1
48	bolt m8x25	4
49	discharge pipe \varnothing 10	1
50	nut m10	2
51	spring \varnothing 10	2
52	washer \varnothing 10	2
53	wheel	2
54	wheel shaft	2
55	drain plug	1
56	washer foot	1
57	tank	1
58	stem rp1/2	2
59	powr cord	1
60	nut rp1/2	1
61	quick couplers	2
62	regulator valve	1
63	safety valve	1
64	pressure gauge	2
65	pressure switch	